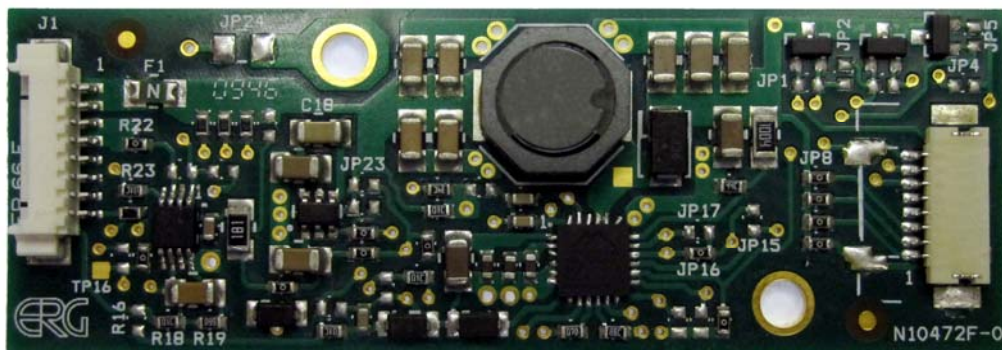


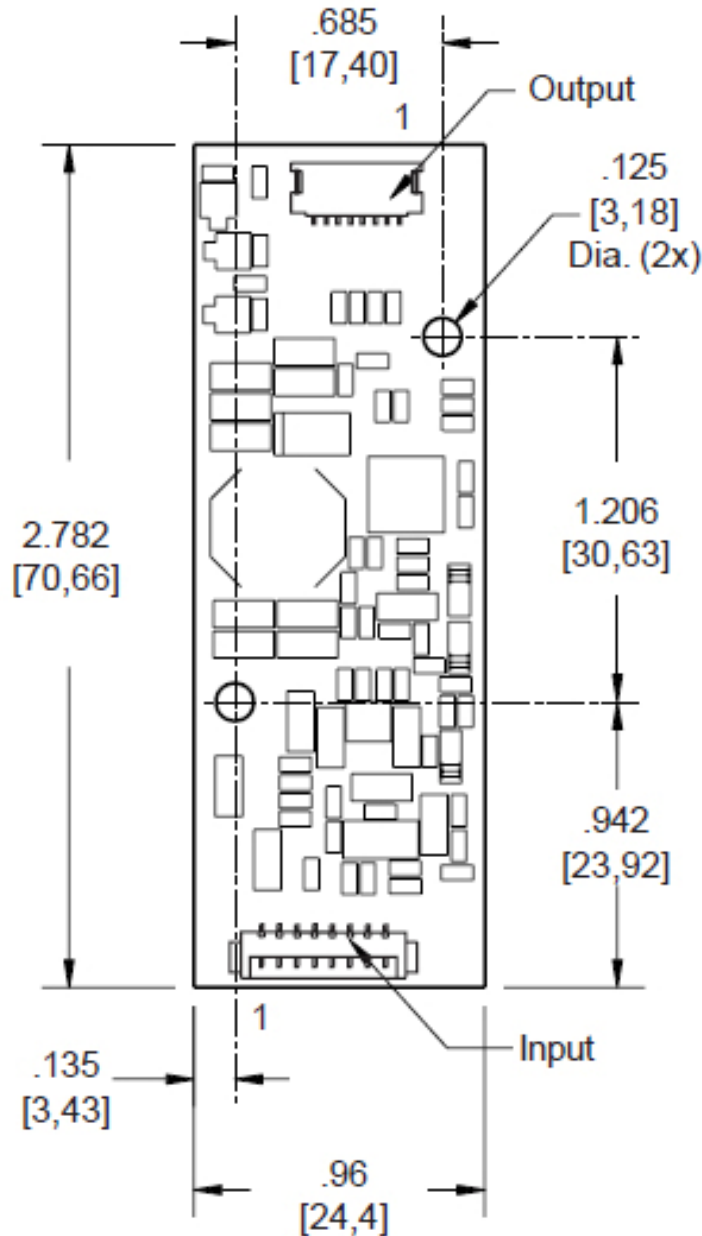
## Smart Force™ SFDMD LED Driver

### Driver for LED Backlights



- High Efficiency
- Less Than 5mm in Height
- Wide Input Voltage Design (8-20V); (5V, 3.3V Available)
- Maximum Current of 180mA
- Maximum Output Voltage of 38.5V
- Powers up to 6 LED Strings
- External PWM dimming to 1000:1; Onboard PWM 255:1
- FFC / FPC Compatible
- OEM LED Panel Compatible
- Designed, Manufactured and Supported in the USA
- One Year Warranty

# Smart Force™ SFDMD LED Driver



Specifications Subject to Change Without Notice 3/2010

*Power solutions for LCD backlights*



**Endicott Research Group, Inc.**  
2601 Wayne Street • Endicott, NY 13760  
607-754-9187 Fax 607-754-9255  
[www.ergpower.com](http://www.ergpower.com)

**Smart Force™**  
Intelligent solutions for display backlighting

